



MIDORI ANZEN THAILAND

---

**NO.1 SAFETY SHOES IN JAPAN**  
service for safety and comfortable environment

# MPN Series

## PRO SNEAKER WORK PLUS



### MPN-905 BLACK



### MPN-905 BLUE



BLACK



BLUE

### MPN-901 BLACK



### MPN-901 BLUE



#### JSAA Standard Class A Protective Sneaker

Toe Cap	Wide Resin 70J
Upper	Artificial Leather / Mesh
Midsole	EVA Cup Insole (Antibacterial-Deodorant)
Outsole	EVA / Synthetic Rubber
Standard Weight	870g / pair

※ With Rubber Toe Cap



## Midori

Size Conversion Chart

Midori Size (cm.)	22.5	23	23.5	24	24.5	25	25.5	26	26.5	27	27.5	28	29	30
Euro	36	37	38	39	40	41	42	43	44	45	46			
UK	3.5	4	5	5.5	6	6.5	7	8	8.5	9	9.5	10	11	12

# AG Series

COMFORT DESIGN



NAVY



WHITE

## AG3595 NAVY



## AG3595 WHITE



## AG3590 NAVY



JIS T8103 Standard Class S Safety Sneaker

Toe Cap	Wide Resin 70J
Upper	Artificial Leather
Midsole	Double Polyurethane foam sole
Size	22.0 - 28.0 cm. (EEE)
Standard Weight	750g / pair (Reference size 26 cm.)
ESD Value	100KΩ ≤ R ≤ 1000MΩ



**LIGHT WEIGHT!!**



**FLEXIBLE SOLE**



**ANTI-STATIC**



**Midori**

Size Conversion Chart

Midori Size (cm.)	22	22.5	23	23.5	24	24.5	25	25.5	26	26.5	27	27.5	28	29	30
Euro	35	36	37	38	39	40	41	42	43	44	45	46	47	48	49
UK	3	3.5	4	5	5.5	6	6.5	7	8	8.5	9	9.5	10	11	12



# ACF Series

## PREMIUM SAFETY

### ACF210



### ACF211



CE Standard EN: ISO 20345:2011 / JIS T8101 Standard

Toe Cap	Wide steel toe cap 200 J	
Upper	Authentic Leather (Light Embossed Leather)	
Sole	Dual Density PU sole (slip Resistant)	
Size	22.0 - 28.0, 29.0, 30.0 cm. (EEE)	
Standard Weight	950g / pair (Reference size 26 cm.)	



CE Standard EN: ISO 20345:2011 / JIS T8101 Standard

Toe Cap	Wide steel toe cap 200 J	
Upper	Authentic Leather (Light Embossed Leather)	
Sole	Dual Density PU sole (slip Resistant)	
Size	23.5 - 28.0 cm. (EEE)	
Standard Weight	950g / pair (Reference size 26 cm.)	



### ACF200



### ACF220



## Midori

### Size Conversion Chart

Midori Size (cm.)	22	22.5	23	23.5	24	24.5	25	25.5	26	26.5	27	27.5	28	29	30
Euro	35	36	37	38	39	40		41	42	43		44	45	46	
UK	3	3.5	4	5	5.5	6	6.5	7	8	8.5	9	9.5	10	11	12

# NGP Series

## NGP9595 NK

Chinese Standard GB 21147-2007

Toe Cap	Wide steel toe cap 200J
Upper	Artificial Leather
Sole	Double Polyurethane foam sole
Size	22.0 - 28.0, 29.0 cm. (EEE)
Standard Weight	850g / pair
ESD Value	100KΩ≤R≤1000MΩ



NAVY



WHITE



Wide steel toe cap

# MSZ Series

## MSZ090

JSAA Standard Class A Protective Sneaker

Toe Cap	Wide resin toe cap 70J
Upper	Artificial Leather
Sole	Double Polyurethane foam sole
Size	22.0 - 28.0, 29.0 cm. (EEE)
Standard Weight	780g / pair



Wide Resin toe cap

### Midori

Size Conversion Chart

Midori Size (cm.)	22	22.5	23	23.5	24	24.5	25	25.5	26	26.5	27	27.5	28	29
Euro	35	36	37	38	39	40	41	42	43	44	45			
UK	3	3.5	4	5	5.5	6	6.5	7	8	8.5	9	9.5	10	11

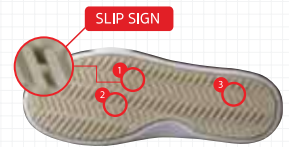
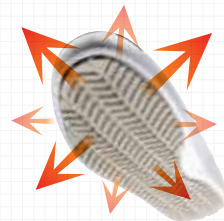


# HiGRIP<sup>®</sup> THE 3<sup>rd</sup> FOR CHEFS and kitchen workers



## SHOES FEATURE

1. Designed and manufactured by highly anti-slip rubber materials that provides the highest gripping performance on any surface
2. The outsole is designed for easy cleaning
3. The shoe cushion perfectly fits all types of feet
4. Air-ventilation function from the insole helps to reduce humidity and moisture inside the shoes
5. The slip sign on the outsole also allows indication of when replacement is needed.



## NEW NHS-600

JSAA Standard Class A Working Shoes

Toe Cap: Resin Toe cap 70J

Upper: Synthetic Leather

Insole: Polyurethane

Outsole: EVA / Synthetic rubber

Weight: 720g/ pair

Color White / Black

Size 22.0-28.0, 29.0, 30.0 cm.



Midori

Size Conversion Chart

Midori Size (cm.)	22	22.5	23	23.5	24	24.5	25	25.5	26	26.5	27	27.5	28	29	30
Euro	35	36	37	38	39	40	41	42	43	44	45	46			
UK	3	3.5	4	5	5.5	6	6.5	7	8	8.5	9	9.5	10	11	12

# ELEPASS Series



## ELEPASS COOL N



Upper	Synthetic Leather
Sole	Polyurethane Foam
Size	21.0 - 28.0, 29.0, 30.0 cm.
Standard Weight	460g./pair (size 26.0 cm.)
ESD Value	100KΩ≤R≤1000MΩ



21	21.5	22	22.5	23	23.5	24	24.5	25	25.5	26	26.5	27	27.5	28	29	30
○	○	○	○	○	○	○	○	○	○	○	○	○	○	○	☆	☆

## ELEPASS COOL LIGHT N

Upper	Synthetic Leather
Sole	Polyurethane Foam
Size	S / M / L / LL / LLL
Standard Weight	420 g./pair (size L)
ESD Value	100KΩ≤R≤1000MΩ



S	M	L	LL	LLL
23.5-24	24.5-25	25.5-26	26.5-27	27.5-28

### Comfortable and Easy to wear!! Antistatic Slipper

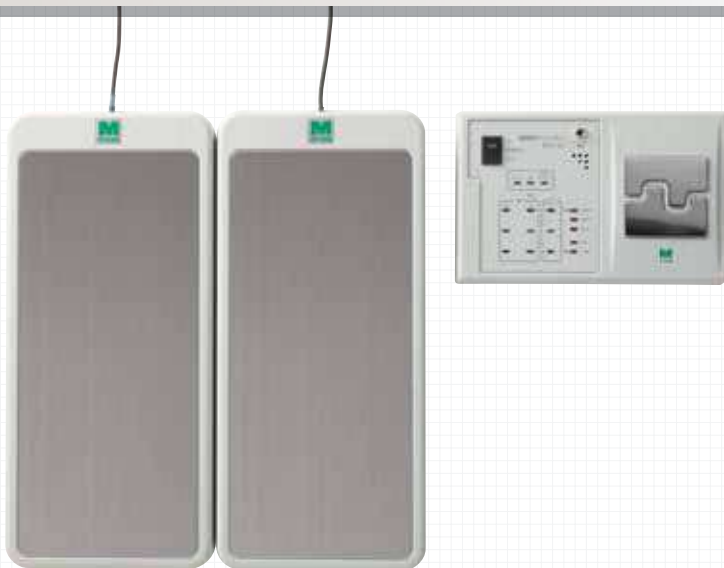
**HEEL SUPPORT!!**

- About 100g/Pair (25.5cm) lighter than the conventional models
- Improved Slip-Resistance by the New Sole Design
- Improved Cushioning Characteristic by the Air Sole Structure
- Durable Urethane Sole
- Stable Electrostatic Efficiency



● Improved Slip-Resistance

# MES-300 ELECTROSTATIC SHOES AND WRIST STRAP CHECKER



## ONLY STAND AND TOUCH

MES-300 is the electrostatic shoes and wrist strap checker which are certified by JIS and IEC standard. Just stand on the electrode dual plate and place hand on the touch panel. Quick and easy checking the effectiveness of ESD shoes and wrist strap.

- Measure the electrical resistance for evaluation effectiveness of both right and left side of ESD shoes.
- Measure electrical resistance for ESD shoes and wrist strap simultaneously or separately.
- Set the high limit and low limit of the measurement resistance.
- In case of inactivity period, MES-300 will automatically switch to sleep mode.
- Both AC and DC are acceptable for power supply.
- Measurement data can be transferred to the host PC via USB interface.



## Specifications

Measurement Resistance Level:	Shoe High Limit 10MΩ/100MΩ/1000MΩ (Option 35MΩ) Shoes Low Limit: 0.1MΩ/1MΩ (Option 0.75MΩ) Wrist High Limit: 10MΩ Wrist Low Limit 0.75MΩ
Measurement Level System:	less than 100MΩ±10% / over 100MΩ±20%
Measuring Voltage:	Shoe DC10 · 100V Automatically switch Wrist strap DC 10 V
Measuring Max Current:	Lower 0.24mA
Operation Mode:	ALL mode: Left side → Right side → Wrist strap Shoes Mode: Left side → Right side Wrist Strap Model: Wrist Strap
Measuring time:	within 3 seconds
Power Supply:	DC 6V (4 AA Alkaline Batteries) or AC Adapter
Relative Humidity:	Under 90%rh, at temperature from 0°C - 40°C
Dimension:	Measurement part : 200mm x 130mm x 40mm Dual electrode plate : 350mm x 160mm x 35mm
Display:	LED
Conenction:	USB B Type Standard: HyperTerminal Windows / Software sell separately



# SAFETY HELMET

## Model : SC-MB RA



Material	ABS
Weight	400g
Size	55-62 cm.



Available Material: ABS / PC / FRP / PE



## Model : SC-11 BV RA



Material	ABS
Weight	380g
Size	55-62 cm.



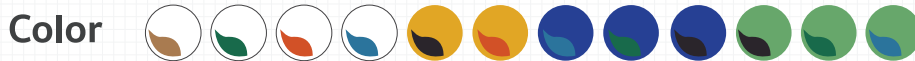
Available Material: ABS / PC / FRP / PE



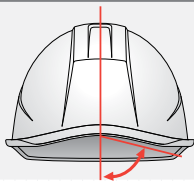
## Model : SC-13 PCLV RA



Material	PC
Weight	445g
Size	55-62 cm.



**Bend and short visor shape :**  
Provide sunlight protection and maintain view range.



**Sharp Rib Mold :** Increase strength and disperse impact absorption.



**Dropped Prevention Structure :**  
More secure with dropping, moving, and bumping back and forth prevention for ultimate safety



# BUMP CAP

*For Light Industry*

## Model : SCL -200A

Material	PE
Weight	175g



Chin Strap & Inner Cap sell separately



# EYES PROTECTION

JIS / ANSI STANDARD

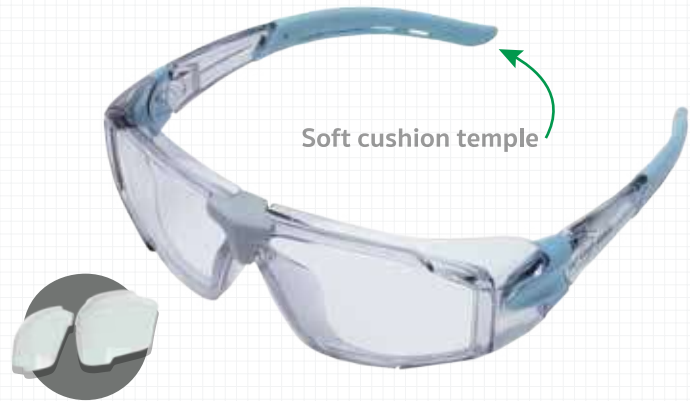
DOUBLE SIDES ANTI FOG

UV CUT

## SAFETY SPECTACLES

### VD-202FT

Size	W148 x H45 x D167 mm.
Weight	37 g.
Frame Color	Light Grey x Light Blue
Lens	PC (Double sides Anti-fog Coating)
Frame	PC, Nylon
Temple	PC, Nylon, PVC



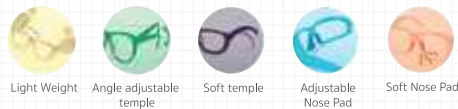
### MP-822

Size	W146 x H47 x D152mm.
Weight	28 g.
Color	Blue
Lens	PC (Double sides Anti-fog Coating)
Frame	Plastic
Temple	PC, Elastomer
Nose Pad	Soft PVC



Adjustable Temple

Soft Silicone Nose Pads



## SAFETY GOGGLES

### VS-301F V PLUS COAT

Size	W162 x H62 x D159 mm.
Weight	50 g.
Frame Color	Blue
Lens	PC (Double sides Anti-fog Coating)
Temple	PC, Elastomer
Visor	Elastomer



Metal Free



# ACCESSORIES



## CUP INSOLE

Model name	ESD Insole
Material	EVA

Suitable for ACF Series

\*This Insole should be used with ESD safety shoes\*

INSOLE SIZE	#2	#3	#4	#5	#6	#7	#8	#9	#0
SHOES SIZE (cm.)	22-22.5	23-23.5	24-24.5	25-25.5	26-26.5	27-27.5	28	29	30



## INSTEP E BLACK

Model name	INSTEP GUARD E
Material	ALUMINIUM
COLOR	BLACK

Suitable for ACF Series

	M	L
SHOES SIZE (cm.)	23.5-25.5	26-28



## INSTEP PRO NAVY FOR SNEAKERS

Material	RESIN / PU
Color	NAVY / WHITE

Suitable for AG3595

	M	L	LL
SHOES SIZE (cm.)	23.5-25.5	26-28	26.5-30



## INNER CAP INC-100

Material	PE
Color	WHITE / BLACK
WEIGHT	67g.
Dimension	55-62cm.

Installed in Fabric cap

**REMARK: THIS IS NOT SAFETY HELMET**

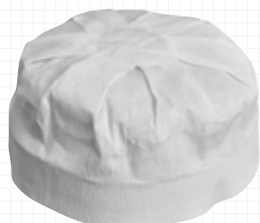


## INNER CAP INC-100B WITH BAND

Material	PE
Color	WHITE / BLACK
WEIGHT	85g.
Dimension	53-62cm.

Installed in Fabric cap / Adjustable back strap

**REMARK: THIS IS NOT SAFETY HELMET**



## PAPER CAP PC-800

Material	PAPER
Color	WHITE
PACKING	120pcs/box



# **NO.1**

## **SAFETY SHOES IN JAPAN**



**MIDORI ANZEN (THAILAND) CO.,LTD.**

183 The Regent House Building,15th floor, Rajdamri Road, Kwaeng Lumpini,  
Khet Pathumwan, Bangkok 10330,Thailand  
Tel: +66(0)2-651-9799, +66(0)2-254-8899, +66(0)2-651-9797  
E-mail: teamsale@midorianzen.co.th



Midori Anzen Safety Shoes